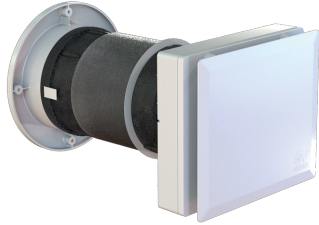


# Technical Data Sheet

CODE 12435

## VORT HRW 40 MONO EVO

Decentralised heat recovery units



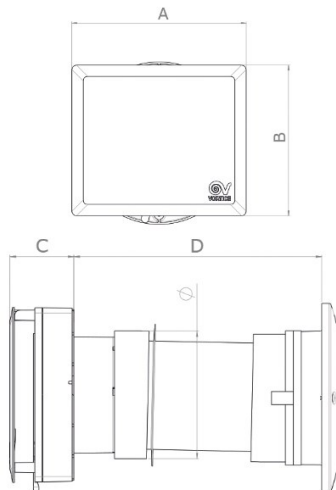
### Certifications



### TECHNICAL AND PERFORMANCE DATA

Filter class	ISOCoarse 65%	Max airflow at Max speed (m <sup>3</sup> /h)	40
Frequency (Hz)	50-60	Max pressure at Max speed (mmH2O)	4,8
Insulation class	II°	Max pressure at Max speed (Pa)	47
Max absorbed current (A)	0,05	Max thermal efficiency (%)	90
Max absorbed power (W)	5	Pressure at 1st speed (mmH2O)	1,7
Max ambient temperature for continuous operation (°C)	30	Pressure at 1st speed (Pa)	17
Nominal diameter (mm)	160	Sound power LWA at Max speed [dB (A)]	49,3
Voltage (V)	220-240	Sound power LWA at Min speed [dB (A)]	36,5
Weight (Kg)	3,30	Sound power at Mid speed LWA [dB(A)]	42,9
Airflow at 1st speed (l/s)	4,2	Sound pressure at 3 m - min speed Lp [dB (A)] 3m - min speed	19
Airflow at 1st speed (m <sup>3</sup> /h)	15	Sound pressure at 3m at Max speed Lp [dB (A)]	31,8
Max airflow at Max speed (l/s)	11,1	Sound pressure Lp at 3m at Mid speed [dB (A)]	25,4

### DIMENSIONS



∅ (mm)	146
Size A (mm)	231
Size B (mm)	200
Size C (mm)	73
Size D (mm)	283

### PER INFORMAZIONI / FOR INFORMATION

#### ITALY

Pre Sales:  
prevendita@vortice-italy.com  
After Sales:  
postvendita@vortice-italy.com

#### UNITED KINGDOM & REP. OF

#### IRELAND

Sales Dept:  
sales@vortice.ltd.uk  
Technical Dept:  
technical@vortice.ltd.uk

#### OTHER COUNTRIES

Sales Dept:  
export@vortice-italy.com  
After Sales:  
after-sales@vortice-italy.com

# Technical Data Sheet

CODE 12435

## VORT HRW 40 MONO EVO

Decentralised heat recovery units



### DESCRIPTION

Decentralized heat recovery unit, for installation in residential and commercial premises of new buildings or those subject to renovation for energy efficiency. Ideal, as well as to ensure proper air exchange, also to prevent excess humidity in the room and mold growth on the walls.

- Shockproof and anti-UV plastic resin structure.
- Nominal diameter: 160 mm.
- Ceramic exchanger with hexagonal cells. High heat exchange efficiency (up to 90% at minimum air flow).
- High efficiency EC motor fan; five operating speeds, to maximize performance when needed, or to minimize noise and consumption.
- On board controls to switch on/off the machine, to adjust the operating mode and for the fan speed selection.
- Three different operating modes:
- Continuous ventilation with heat recovery: the product cyclically extracts and introduces air to and from the room, recovering the

- energy stored in the exchanger;
- Ventilation with air extraction only: stale air is extracted from the environment;
- Ventilation with air intake only: the product introduces fresh air into the environment.
- Two air filters, a 65% IsoCoarse and a pre-filter for dust, both easily removable for washing.
- LED light for filters status placed in the lower part of the chassis, immediately behind the front cover.
- Mechanical quick closing system of the air delivery integrated into the product chassis.
- External rubber grille, which can be installed from the outside using plugs or from the inside, through the hole in the wall.
- Insect mesh, which can be installed into the duct from inside.
- Possibility of connection to remote sensors C-TEMP and C-HCS for the automatic management of the product.

### ACCESSORIES



**FTR ePM10  
50% (M5)  
d.155X40**  
Code 21926



**TUBO PVC  
D.160 L=700  
(HRW 20)**  
Code 22599



**KIT FTR ISO  
COARSE 65%  
(G3) D.127X10**  
Code 22466



**MWS**  
Code 21148



**RGR**  
Code 21190



**WSG-INOX**  
Code 21192



**WSG-W**  
Code 21193



ITALY  
Pre Sales:  
prevendita@vortice-italy.com  
After Sales:  
postvendita@vortice-italy.com

UNITED KINGDOM & REP. OF  
IRELAND  
Sales Dept:  
sales@vortice.ltd.uk  
Technical Dept:  
technical@vortice.ltd.uk

OTHER COUNTRIES  
Sales Dept:  
export@vortice-italy.com  
After Sales:  
after-sales@vortice-italy.com

